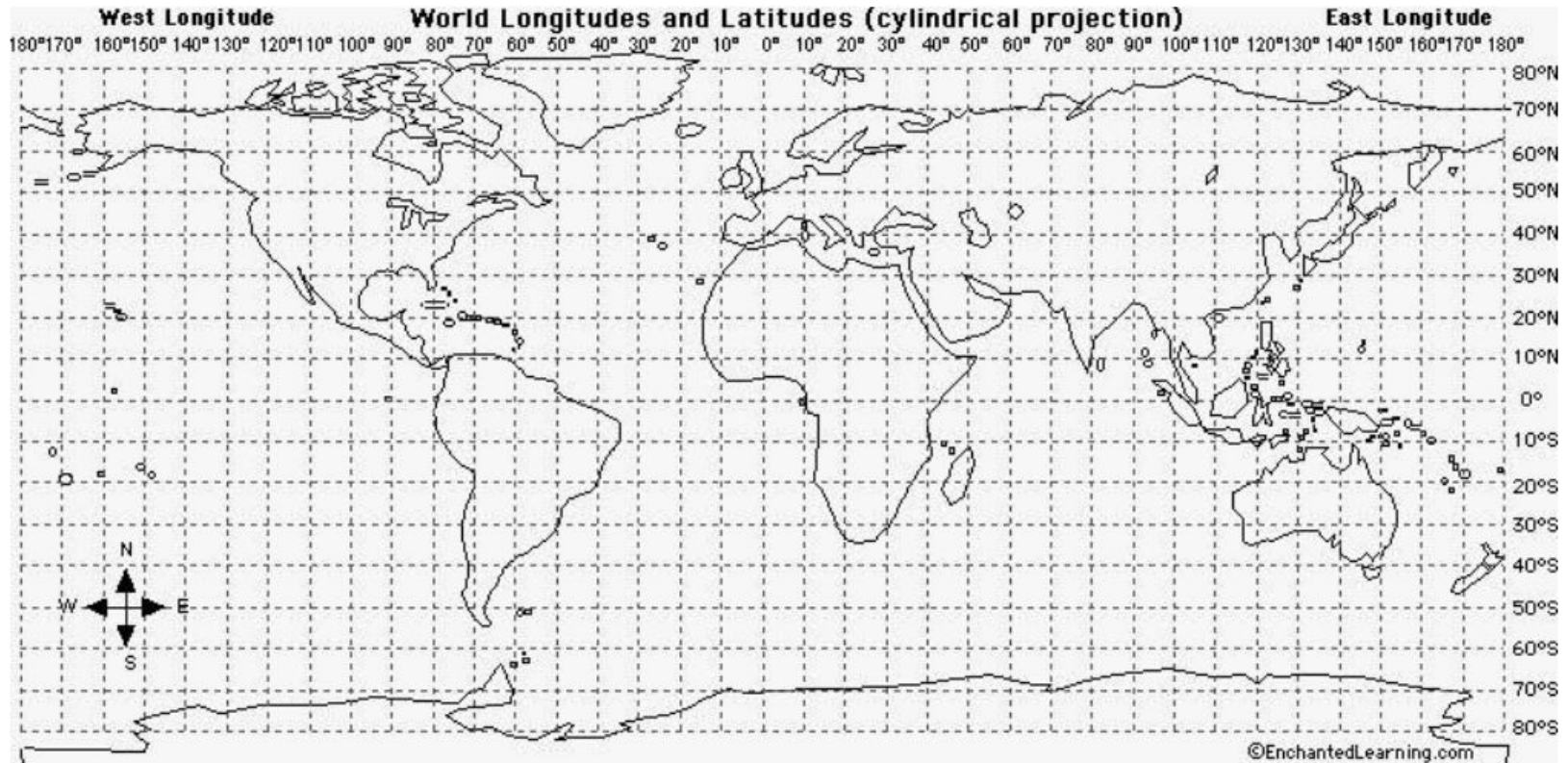


# Warm-up #13



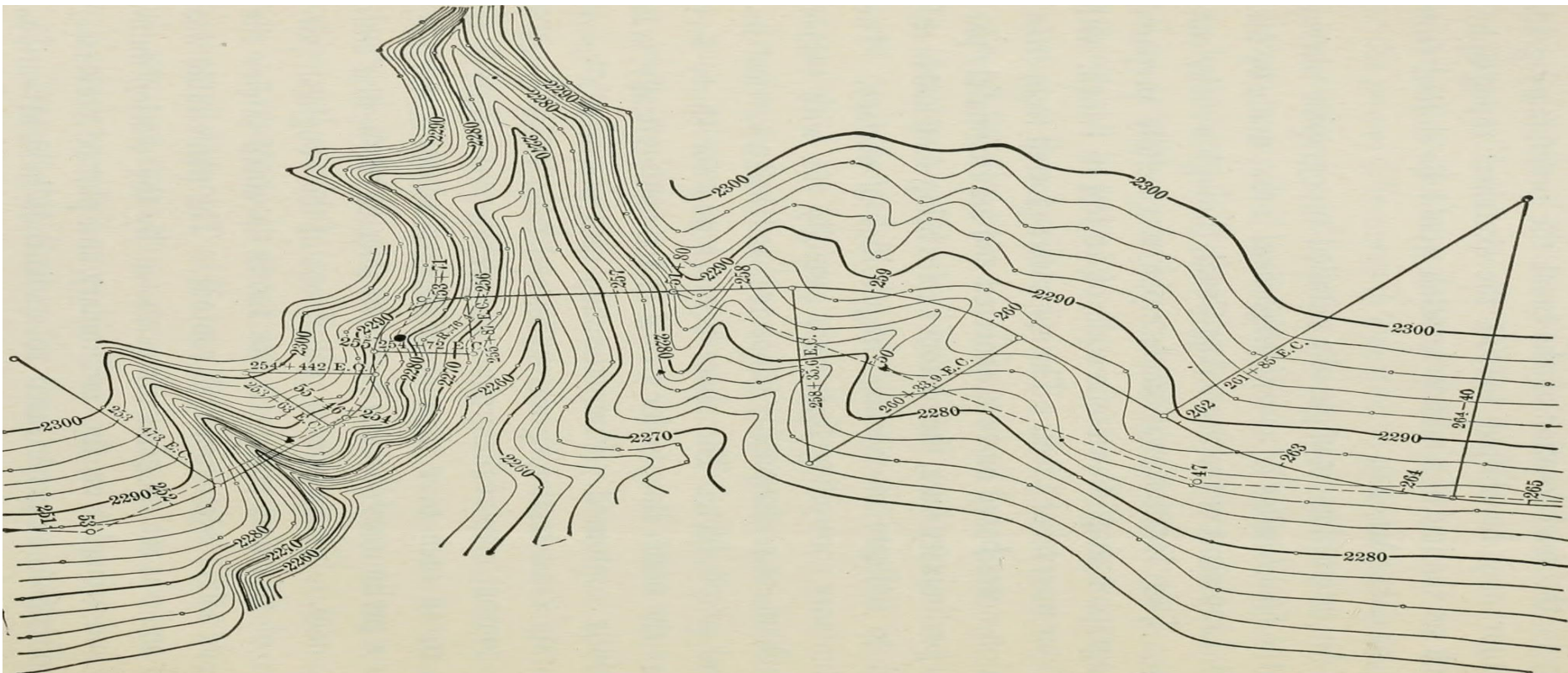
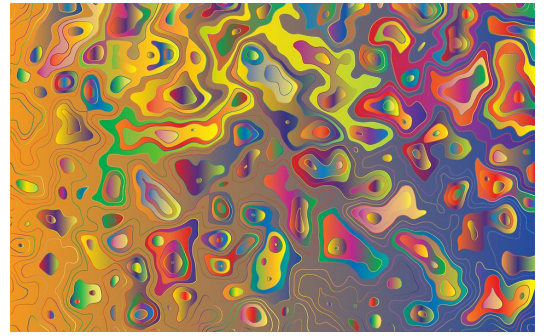


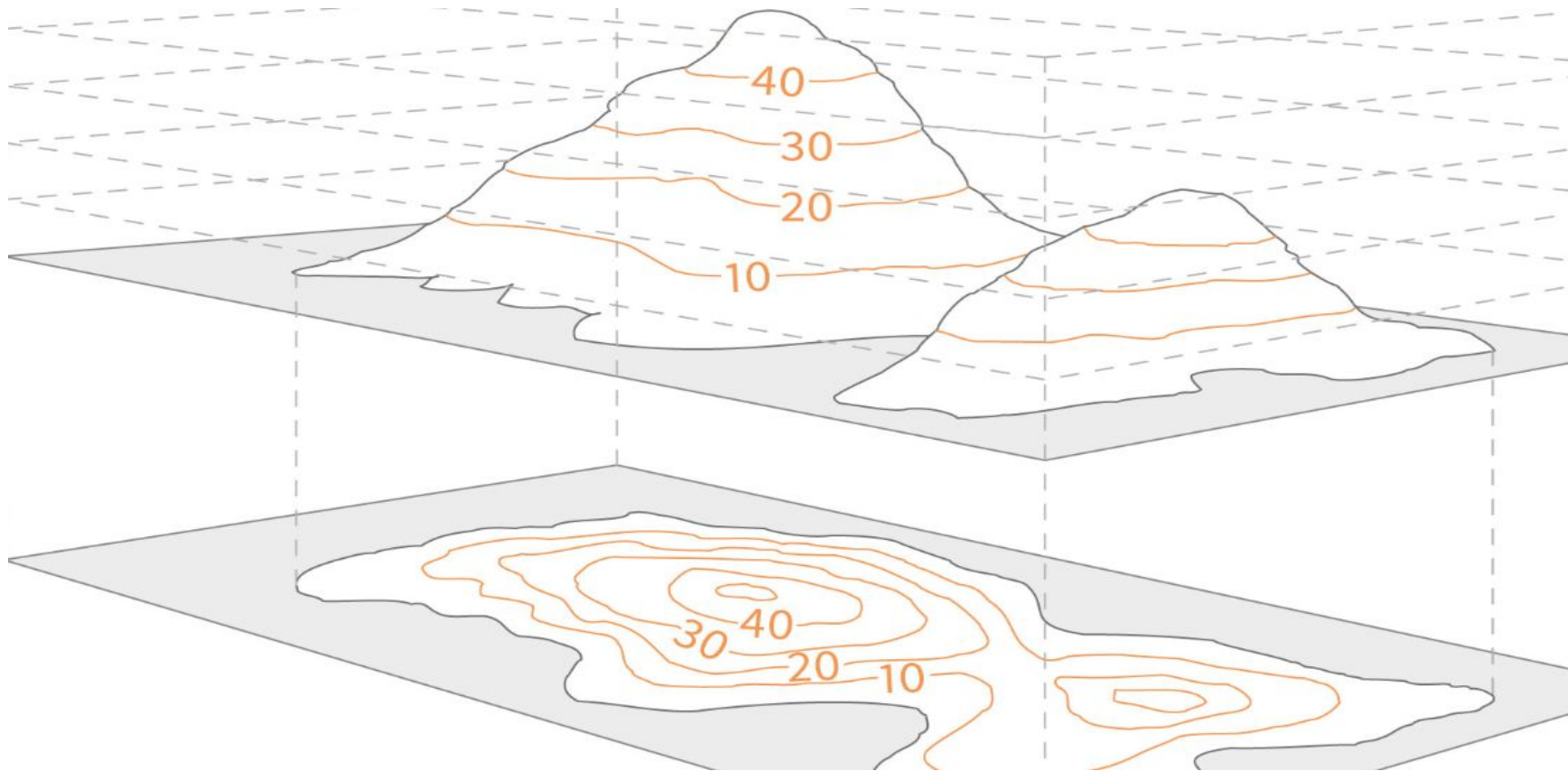
FIG. 9.—DETAILED CONTOUR SURVEY FOR CANAL LOCATION.  
 Original scale 100 ft. to 1 inch. Contour interval 2 ft.

Contour Mapping - September 25, 2018

# Contour Maps



- Another name for **Topographic maps**
  - A map that shows the **elevation** of a terrain on a 2D surface.
- A contour is a line drawn on a map that joins points of equal height **above sea level.**
- Contours follow points of equal height. If you can't see a number, follow the line to find one.
- On some maps, not all contours will have labels and are printed slightly lighter, but you can work out the height by looking at labelled contours above and below
- The best way to understand contours is to practice by comparing a map to the real world or photographs



How tall is the smaller mountain? Remember, the closer the contour lines, the **STEEPER** the incline.